

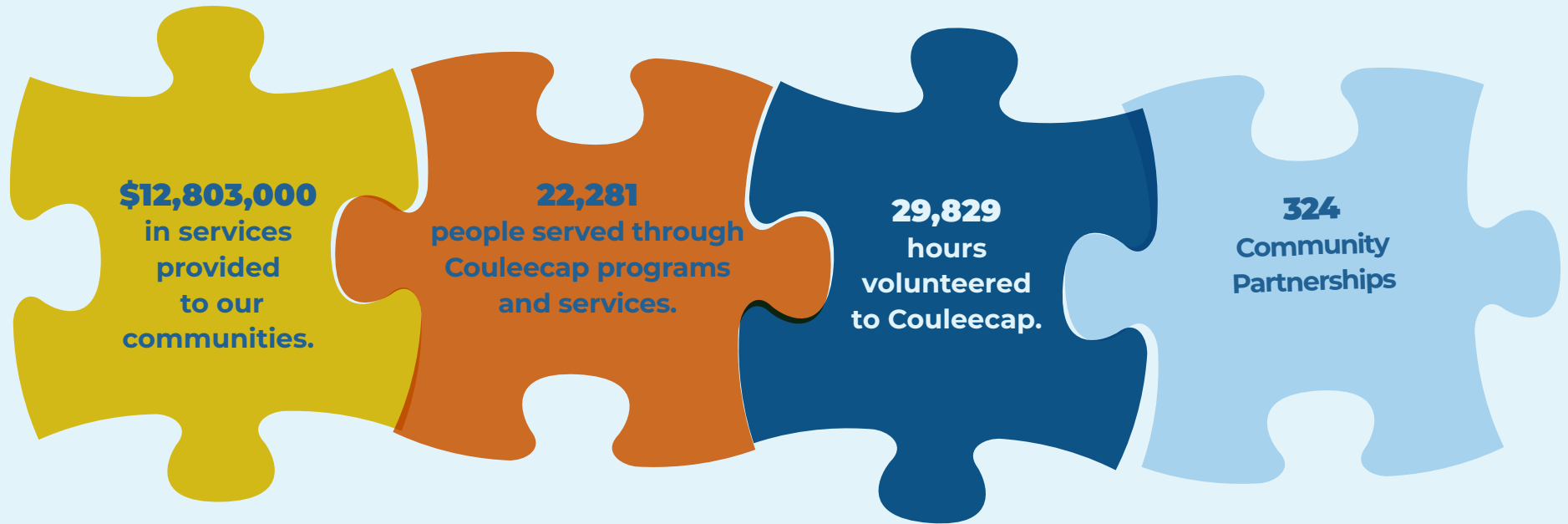
TOGETHER WE THRIVE.



2025 IMPACT REPORT

Couleecap
your local community *action* program

TOGETHER WE THRIVE.



OUR **IMPACT** IN 2025

THRIVING COMMUNITIES

For six decades, Couleecap has lived by the belief that Together We Thrive, and your support has been at the heart of that truth. Your generosity has fueled our mission, empowered families, and strengthened entire communities. Because of you, we have been able to anticipate emerging needs and break down barriers to bring innovative programs to the region. You make it possible for families and the communities to not only find stability, but to thrive.

With your partnership, we have pioneered new services and expanded proven programs to respond to challenges facing our region. Whether combating housing instability, increasing economic opportunity, advancing food security, or revitalizing communities, your investment has empowered us to drive solutions that have a lasting impact. You are an essential part of every advancement we make.

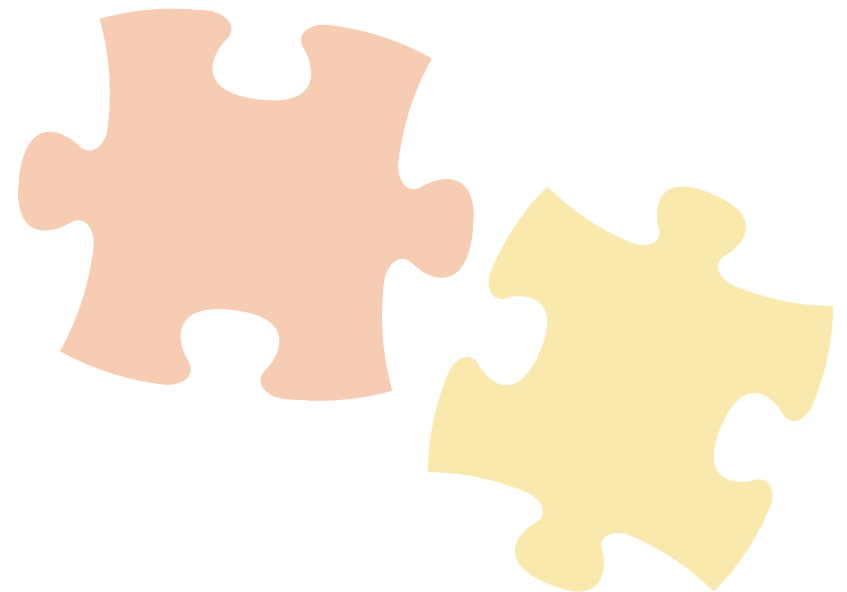
Sixty years later, our mission remains as urgent and inspiring as ever, and it continues forward because of your belief in what we can achieve together. As we look to the future, your continued support will guide the next generation of impact. When our communities come together, supported by people like you, we don't just survive—**we thrive.**



In the 1970's Couleecap and a Minnesota Community Action Program joined forces to obtain a Rural healthcare program.



In 2024, Couleecap celebrated an important milestone: 1 million people served!



TOGETHER WE THRIVE.



OUR **IMPACT** IN 2025

THRIVING NEIGHBORS

Years ago, Sherry was a young single mother facing a difficult relationship and overwhelming financial strain. She was determined to build a better life for her three children. While enrolled in Southwest Tech's Child Development Program, she worked multiple part-time jobs and still struggled to stay in school. That's when she turned to Coulecap.

Sherry entered our dislocated worker program, she received the support she needed, transportation assistance, tutoring, note-taking help, and encouragement that kept her moving forward. **"I probably would have quit if Coulecap hadn't been there with their supports and counseling,"** she shared. Instead, she thrived. Sherry became President of the statewide student organization, served as an ambassador for the college, and graduated with her associate degree.

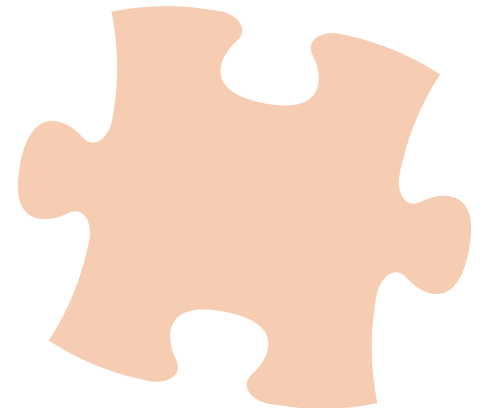
Sherry didn't stop there. She went on to earn her bachelor's degree in Early Childhood Development and a master's degree in Servant Leadership. With her growing expertise and passion for helping others thrive, she and her daughter opened Sprout Early Learning Center, where they now support staff pursuing early childhood education and strengthen the profession by teaching future educators.

Sherry's journey is a powerful reminder that with the right support at the right time, people don't just overcome challenges, they thrive, and they help others thrive too.

Coulecap started as a Head Start agency in 1966, promoting early education in our community. Now, through programs like Skills Enhancement and Work-n-Wheels and others, we support local childcare providers.



Sherry in her office at Sprout Early Learning Center.



TOGETHER WE THRIVE.



OUR **IMPACT** IN 2025

THRIVING LOCAL ECONOMIES

A thriving community begins with a strong local economy, and you are vital in making that possible. **Thanks to your generosity, Couleecap is able to bring millions of dollars in resources into our region each year, connecting communities with opportunities they might not otherwise receive.** These dollars directly support local businesses, strengthen neighborhoods, and create pathways for families to build stability. Your investment helps keep our local economy vibrant and growing.

Couleecap is a trusted bridge between state and federal resources and the people who need them most. When we secure funding for housing programs, workforce development, or community revitalization, those dollars flow straight back into our local communities, creating jobs, supporting local contractors, and growing our local economy.

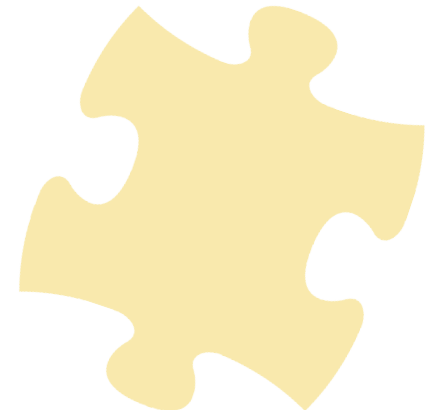
Together, we create a safety net that keeps our communities strong, no matter the challenge. And when a crisis hits, your partnership becomes even more essential. During moments of uncertainty, like government shutdowns or program funding lapses, your support ensures our people don't fall through the cracks. When federal food programs pause, Couleecap and donors step in to keep pantry shelves stocked. When families face sudden financial strain, your gifts help us fill the gaps with emergency services and flexible support.

Your generosity fuels more than programs; it fuels resilience. You make it possible for Couleecap to respond quickly, leverage new opportunities, and ensure our local economy has the resources it needs to thrive. Thank you for standing with us, for believing in what our communities can achieve, and for helping ensure that together, we truly thrive.

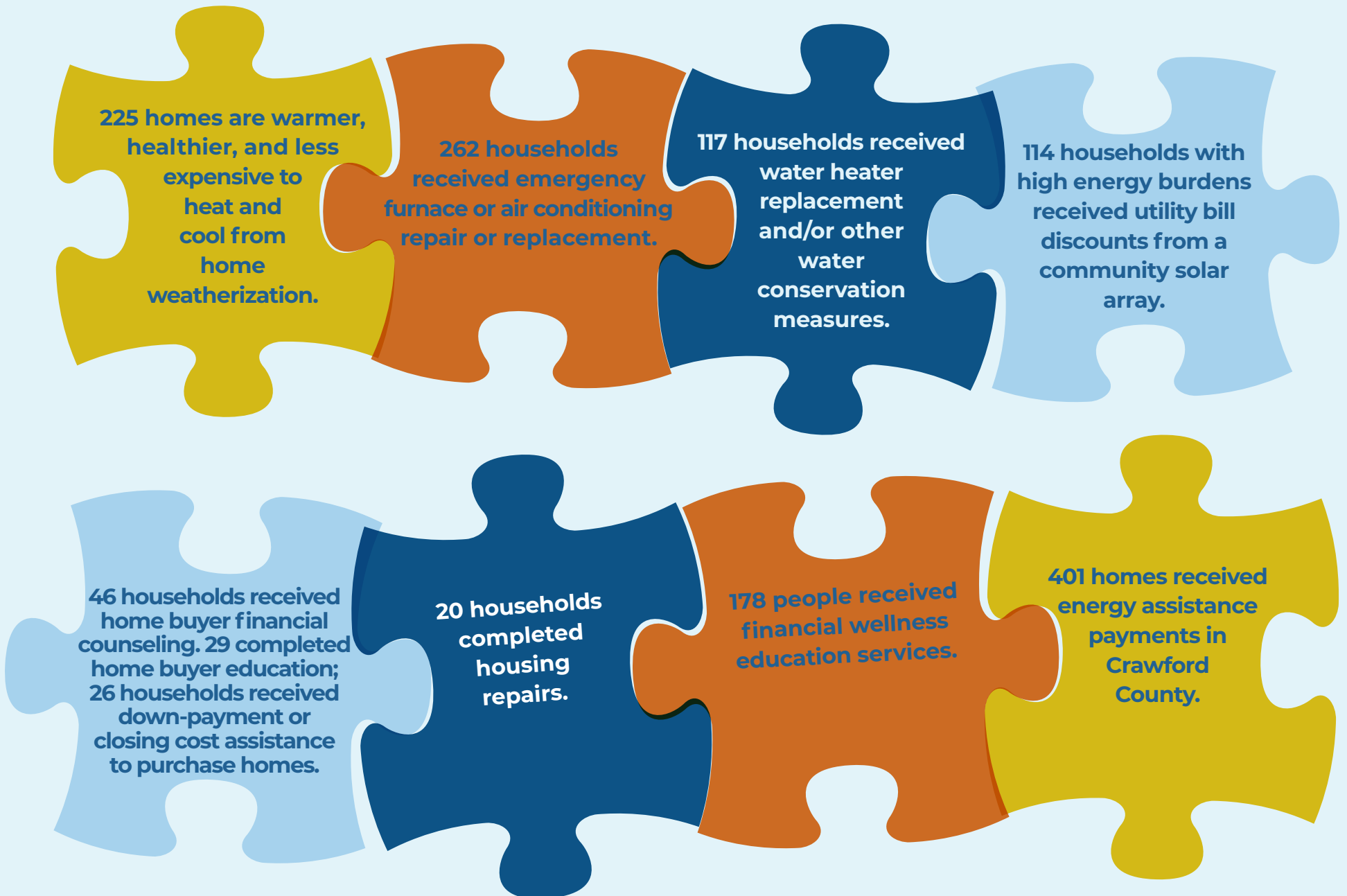
Couleecap continues to grow our food programs to meet increased need. Our newest food pantry opened in Norwalk in 2023.



In 1983 Couleecap set up food pantries in Crawford, Monroe, and Vernon County Couleecap offices.



TOGETHER WE THRIVE.



OUR **IMPACT** IN 2025

THRIVING INTO THE FUTURE



Energy Services yesterday and today. Couleecap has been an energy services provider since the 1970's, bringing savings to our neighbors. Today, we use solar, heat pump technology, and other opportunities to address energy poverty in bigger ways.

Couleecap has been an affordable housing developer for more than three decades. Today, we are scaling our experience and partnerships to build housing that fills gaps and changes lives.



Couleecap is an experienced community collaborator and improving service alongside mission-aligned partners is important to us. Couleecap is a founding owner of the REACH Center, a multi-agency social services and healthcare center in La Crosse, designed to provide drop-in help to those in need.

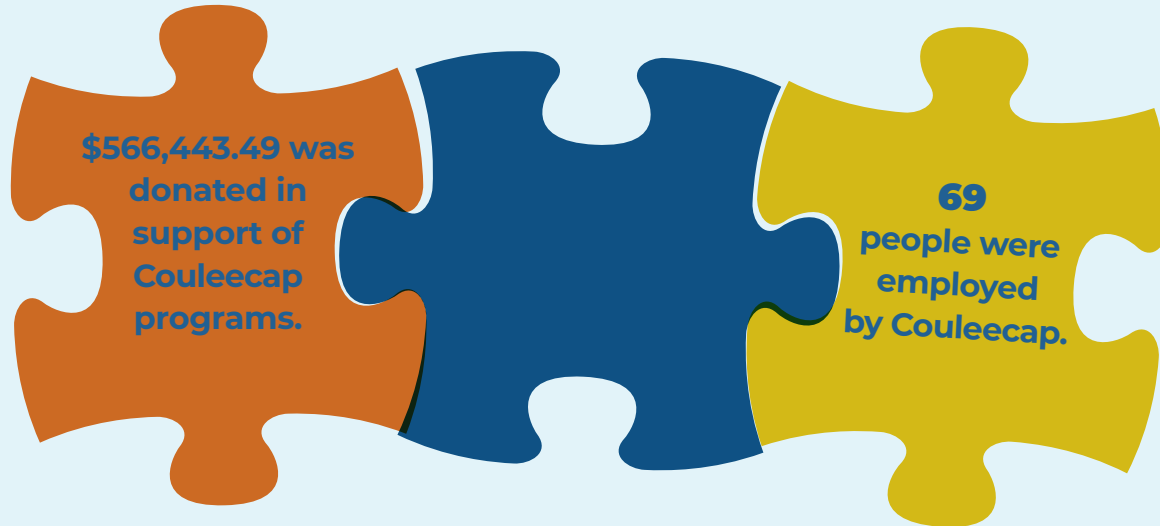


FINANCE REPORT

For the year ending December 31, 2025

UNAUDITED

SOURCES OF SUPPORT	
GRANT REVENUE	\$11,938,899.00
PROGRAM SERVICE CONTRIBUTIONS	\$287,667.00
CONTRIBUTIONS	\$1,567,510.00
RENTAL INCOME	\$526,081.00
RETAIL SALES (BARGAIN BOUTIQUE)	\$331,134.00
OTHER INCOME	\$1,431,222.00
INCLUDES RENTAL INCOME, PROGRAM AND INTEREST INCOME	
TOTAL REVENUE	\$16,082,513.00



EXPENDITURES	
PROGRAM ACTIVITIES	
AFFORDABLE HOUSING, HOME REHABILITATION, & HOME BUYER PROGRAMS	\$3,310,869.00
HOUSING & SERVICES TO END HOMELESSNESS	\$1,491,553.00
WEATHERIZATION SERVICES	\$3,636,750.00
EMERGENCY ASSISTANCE: FOOD, CLOTHING, AND EMERGENCY FURNACE	\$3,003,028.00
BUSINESS & ECONOMIC DEVELOPMENT	\$218,570.00
EMPLOYMENT & TRANSPORTATION	\$361,291.00
COMMUNITY COLLABORATION ACTIVITIES	\$369,179.00
TOTAL PROGRAM ACTIVITIES	\$12,391,240.00
MANAGEMENT & GENERAL	\$608,898.00
FUNDRAISING	\$54,992.00
TOTAL EXPENSES	\$13,055,130.00
2025 CHANGE IN NET ASSETS	\$3,027,383.00

Couleecap ended 2025 with a \$3.0 million increase in net assets. This surplus is primarily the result of GAAP-required accounting treatments related to capital asset purchases, restricted contributions for the Haven on Main development, affordable rental forgiven debt, and tax credit development entries. These items increase reported revenue without a corresponding operating expense in the same year.

For a more detailed financial statement please visit our website Couleecap.org.

OUR BOARD OF DIRECTORS

Couleecap is supported by an 18–24 member Board of Directors representing a blend of voices: community members elected by those we serve, County Board Supervisors, and leaders from private organizations and groups. This diverse board reflects the collaborative spirit that drives our mission forward and reminds us that lasting change happens when we work together.

Through their leadership, vision, and unwavering commitment to service, they help ensure that our work remains innovative, inclusive, and deeply rooted in community strength—because when we come together, we all thrive.

2025-2026

Nidia Alcantar, Monroe Co Low-Income Community Representative

Bill Brockmiller, Special Interest Group: AFL-CIO

Randall Brown, La Crosse Co Low-Income Community Representative

Theresa Burns-Gilbert, Special Interest Group: Accessible and Affordable Housing

Owen DuCharme, Crawford Co Board of Supervisors Representative

David Eggen, Vernon Co Board of Supervisors Representative

Michele Engh, Special Interest Group: Faith Community

Joey Esterline, Monroe Co Board of Supervisors Representative

Mark Forsythe, Special Interest Group: Banking and Finance

Maureen Freedland, La Crosse Co Board of Supervisors Representative

Mari Freiberg, Special Interest Group: Leadership Development and Strategic Planning

Kim Hawthorne, Monroe County Low-Income Community Representative

George Kruck, Vernon County Low-Income Community Representative

Monica Kruse, La Crosse Co Board of Supervisors Representative

Anastasia Penchi, Vernon County Low-Income Community Representative

Larry Quamme, Crawford Co Board of Supervisors Representative

Arlette Rodriguez-Miller, Special Interest Group: The Greater La Crosse Area Diversity Council (GLADC)

Renee Salmon, Crawford County Low-Income Community Representative

Nathaniel Slack, Vernon Co Board of Supervisors Representative

Roger Slama, Crawford County Low-Income Community Representative

Michelle Wanders, Special Interest Group: Real Estate Development

Sam Xiong, La Crosse County Low-Income Community Representative



Honoring Six Decades of Community Action and Impact

For 60 years, Couleecap has embraced innovation to help people and communities thrive. From launching new programs to filling critical gaps when families need support, our mission has always centered on creating opportunity and strengthening our region.

And donors like you have made it all possible.

Your generosity has fueled local solutions, supported families, strengthened our economy, and ensured that no one is left behind. As we look to the next 60 years, your continued partnership will help us keep innovating, responding, and building stronger futures for everyone.

Thank you for believing in this work—and for helping our communities continue to thrive.

Ensure a Thriving Future for Everyone

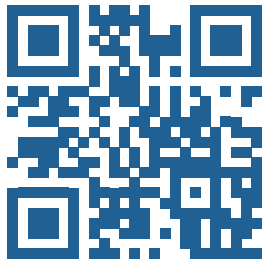


Couleecap

your local community *action* program

201 MELBY STREET | WESTBY WI 54667

Support our work!



Since our establishment in 1966, we have implemented over 252 programs to address poverty in our region, serving over 1 million people.



WEBSITE
Couleecap.org



EMAIL
Contactus@couleecap.org



PHONE
608.782.4877

A United Way member agency
An equal opportunity employer and service provider. Auxiliary aids and services available upon request.

